

VISION® Stainless Steel Surface Maintenance of Upper Components

The following information is provided to help you in the proper care of **VISION** stainless steel upper components, seat frames and back panels. With good preventative maintenance, you can extend the life span of the product and maintain an attractive appearance for many years.

Cleaning

A solution of water and household detergent cleans most hard surfaces. More persistent dirt and marks are removed with the application of a small amount of household cleaners to the affected area. After cleaning, rinse surfaces thoroughly with clean water, wipe with a clean, soft cloth and allow to dry.

For quick removal of paint or marker style graffiti, spray on recommended cleaner, **TSW2R Multi-Master***, let it soak in for a few seconds and remove the cleaning agent with a soft, white, disposable cloth. A final water rinse and a wipe dry will remove any remaining cleaning agent residue per cleaner instructions.

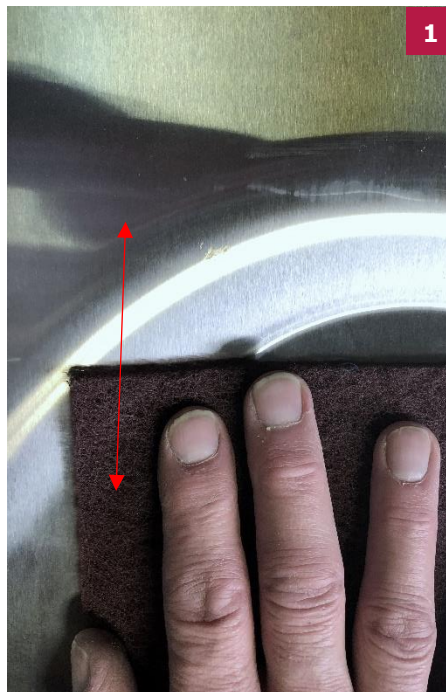
Minor Scratch and Scuff Repair



VISION seat frames and back panels are produced with a 180 grit vertically polished finish.



After blending. Rub the entire surface with a stainless-steel wipe or cleaner solution and a soft cloth to create an even finish.



Identify minor scratches or scuffs. In the same direction of polished finish, rub in-line with a marron **Scotch-Brite™** finishing pad over the damaged area.



Continue rubbing until the surface is free of minor scratches or scuffs. Widen the area to blend between the manufactured and repaired finish.