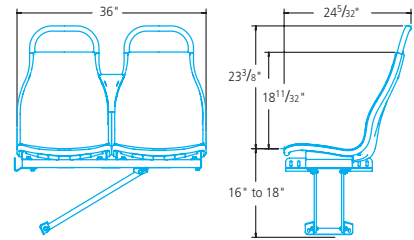


Model Types and Dimensions



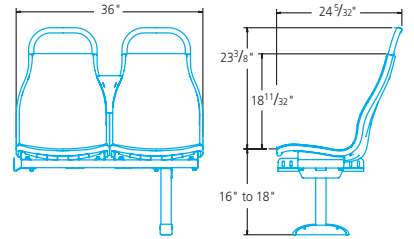
1-2 Passenger Transverse

- 18" seat width
- Polished stainless steel back panel
- Stainless steel or thermoplastic grab rail
- Standardized hardware
- No visually exposed fasteners on the seat upper
- Optional die cast aluminum stanchion cup
- Optional back extension
- Wide array of mounting configurations



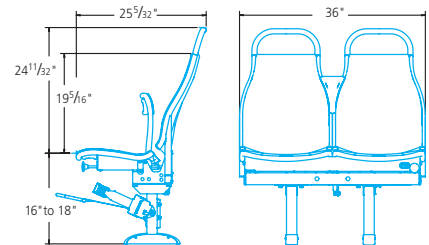
2 Passenger Transverse Flip-Up

- 18" seat width
- Polished stainless steel back panel
- Locking options: up, down, up or down
- Stainless steel or thermoplastic grab rail
- Stainless steel seat-bottom panel
- Optional die cast aluminum stanchion cup
- Wide array of mounting configurations
- Integrates with American Seating mobility aid securement products for A.D.A. compliance



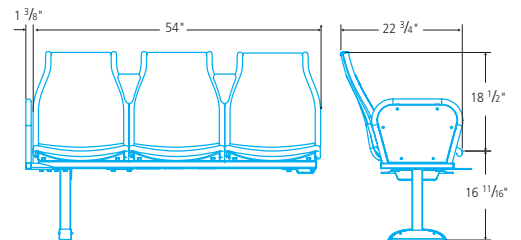
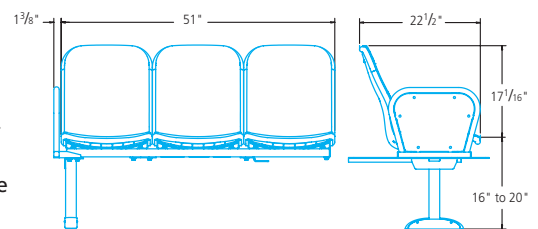
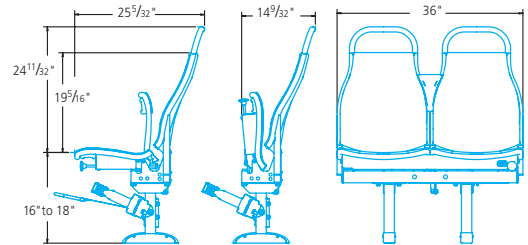
2 Passenger Individual Transverse Flip-Up

- 18" back & 17" seat width
- Polished stainless steel back panel
- Locking options: up, down, up or down
- Stainless steel or thermoplastic grab rail
- Stainless steel seat-bottom panel
- Optional die cast aluminum stanchion cup
- Accommodates carts and strollers for additional storage



1-5 Passenger Longitudinal

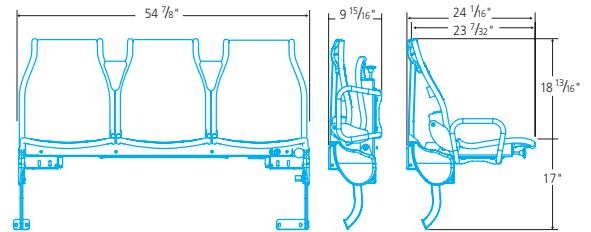
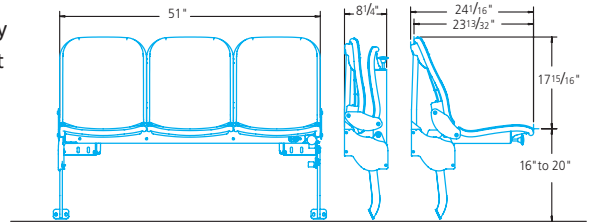
- 17" or 18" seat width
- Armrest restraints:
 - Stainless steel tubular retaining arm with or without stainless steel panel insert
 - Closed vacuum-formed energy arm available in 980 Grey or 1471 Charcoal
- Standardized hardware
- No visually exposed fasteners on the seat upper (without arm restraint)
- Partial thermoplastic back closeout
- Optional die cast stainless steel stanchion cup
- Wide array of mounting configurations





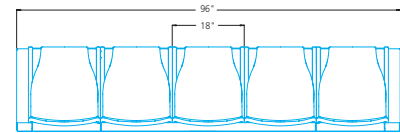
1-3 Passenger Longitudinal Flip-Up

- 17" or 18" seat width
- Locking options: up and down or up only
- Fixed stainless steel tubular arm restraint or fold-up armrest
- Stainless steel seat-bottom panel
- Wide array of mounting configurations
- Optional touchpad/signaling devices
- Integrates with exclusive American Seating mobility aid securement products for A.D.A. compliance



2-5 Passenger Rear Cross

- 18" seat width
- Standardized hardware
- Optional gas spring lift-assist on center 3 passenger seats
- Wide array of mounting configurations including various engine access options



Barrier

- High-strength thermoplastic panel
- Stainless steel or thermoplastic grab rail
- Standard panel colors are 980 Grey and 1471 Charcoal. Other current colors are available*
- Integrates with American Seating mobility aid securement products for A.D.A. compliance

* InSight®, Metropolitan® and Model 6468 barrier colors

