

6468 and Metropolitan® Fiberglass Shell Maintenance

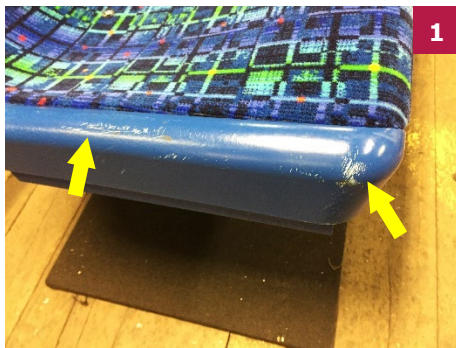
The following information is provided to help you in the proper care of these fiberglass shells. With good preventative maintenance, you can extend the life span of fiberglass and eliminate down time for replacement of the product.

Cleaning

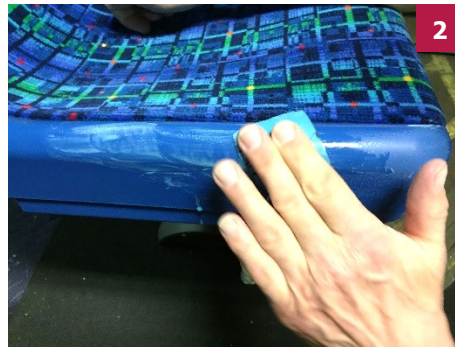
A solution of water and household detergent cleans most fiberglass surfaces. More persistent dirt and marks are removed with the application of a small amount of household cleanser to the affected area. After cleaning, rinse fiberglass surface thoroughly with clean water, wipe with a clean soft cloth and allow to dry.

For removal of ball-point and marking pen inks, rub an alcohol dampened soft clean cloth over the affected area. If ink does not remove with alcohol application, use a semi-paste mixture of six parts Roman® bleach and four parts BAB-O® cleanser. Apply mixture with a soft clean cloth and rub ink spot and immediate area until ink is removed. Rinse with clear water and wipe with a clean damp cloth and allow surface to dry.

Minor Scratch and Scuff Repair



Identify scratched or scuffed (white) areas on the shell. If necessary, protect or remove fabric inserts.



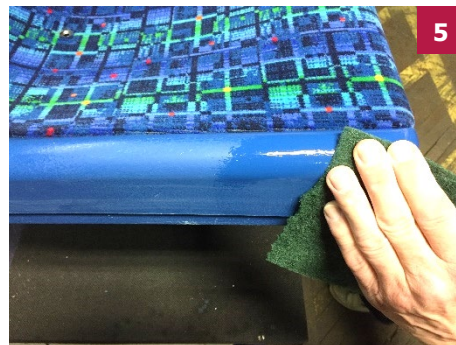
Rub back and forth with wet sand paper and water. Coarser papers will work faster, but finish with at least 400 grit.



Between sanding sessions, a white film will appear, this is normal, just wipe away with a moist cloth.



After sanding and wiping clean, the surface will appear dull.



Rub in Mineral Oil with a green Scotch-Brite™ pad over sanded area.



Some texture will be removed, but white scratches or scuffs will not be visible.