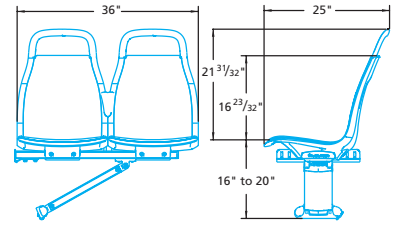


## Model Types and Dimensions



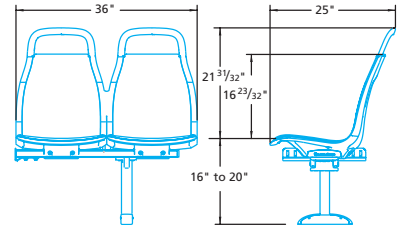
### 1-2 Passenger Transverse

- 18" seat width
- Cantilever or T-pedestal mount
- Thermoplastic, stainless steel, or fabric back panel
- Integral energy-absorbing grab rail
- Optional stanchion cup
- Optional aisle armrest restraint



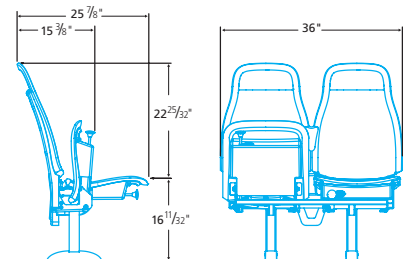
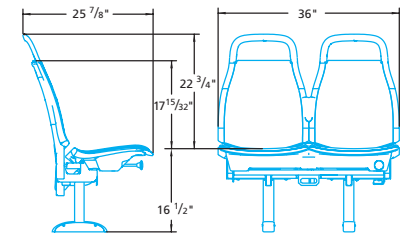
### 2 Passenger Transverse Flip-Up

- 18" seat width
- Thermoplastic, stainless steel, or fabric back panel
- Locking options: up, down, up or down
- Integral energy-absorbing grab rail
- Optional stanchion cup
- Wide array of mounting configurations
- Integrates with A.D.A. compliant mobility aid securement products



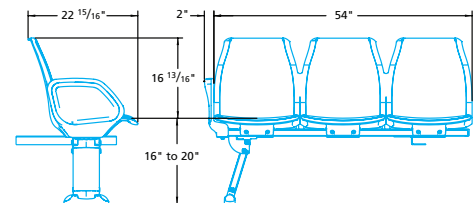
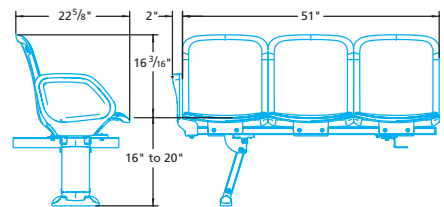
### 2 Passenger Individual Transverse Flip-Up

- 18" back & 17" seat width
- Thermoplastic, stainless steel, or fabric back panel
- Locking options: up, down, up or down
- Integral energy-absorbing grab rail
- Optional stanchion cup
- Accommodates carts and strollers for additional storage



### 1-5 Passenger Longitudinal

- 18" back & 17" seat width
- Aluminum mounting beam construction
- Closeouts and trim color-matched with seating; stainless steel option available in select components
- Armrest restraints:
  - Closed energy arm (All black or with optional stainless steel inner panel)
  - Open loop arm (offered in black)
  - Stainless steel tubular restraint
- Optional stanchion cup

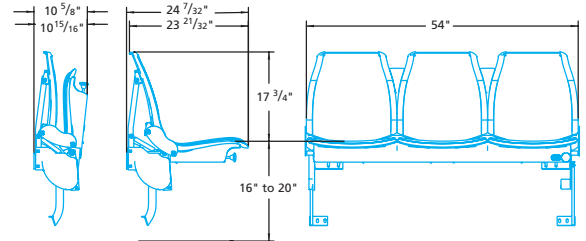
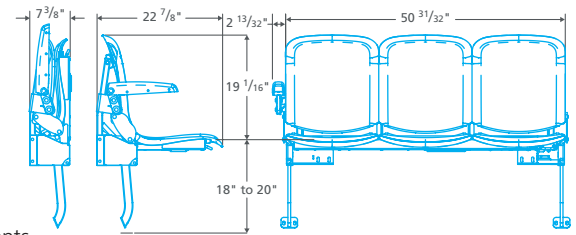




### 1-3 Passenger Longitudinal Flip-Up

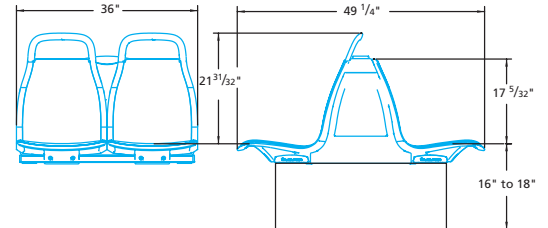
- 17" seat width: 1, 2 or 3 passenger
- 18" seat width: 2 or 3 passenger
- Aluminum mounting beam construction
- Locking options: up, down, up or down
- Folding or fixed retaining arms
- Closeouts and trim color-matched with seating; stainless steel option available in select components
- Integrates with A.D.A. compliant mobility aid securement products
- Optional touch-pad/signaling devices

**Note:** 17" InSight Classic flip-up seats require VR-50 onsets or only one onset can be a 1/2" foam cushion to fold properly.



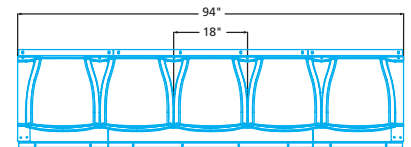
### 2 or 4 Passenger Back-to-Back

- 18" seat width
- Aluminum mounting beam construction
- Closeouts and trim color-matched with seating
- Optional integral energy-absorbing grab rail
- Optional stanchion cup
- Closeouts and trim color-matched with seating; stainless steel option available in select components
- Optional aisle armrest restraint



### 2-5 Passenger Rear Cross

- 18" seat width
- Closeouts and trim color-matched with seating
- Wide array of mounting configurations including various engine access options



### Barrier

- Nylon grab rail
- Restraint belts stowed off floor and hooked on barrier, providing easy access and quick securement
- High-strength thermo resin panel color-matched to the seat
- Optional stainless steel grab rail
- Integrates with A.D.A. compliant mobility aid securement products
- Securement belts available in various configurations

